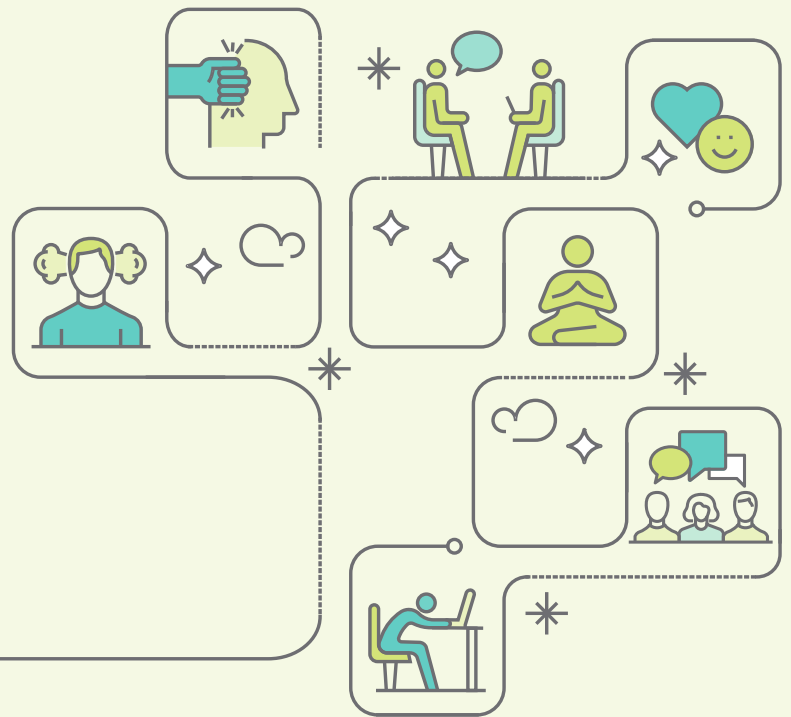


# SUPPORTING Employee Mental Health



If you are interested in strategies for supporting employee mental health this session is for you.

Hear from an expert, get your questions answered and receive a comprehensive list of resources

[REGISTER HERE](#)  
**Complimentary Lunch**  
included

**Here4hope** invites you to join us for complimentary lunch and hear from **Mary Ann Banyton**, a workplace relations specialist, who served as Co-chair of the Technical Committee for the National Standard of Canada on Psychological Health and Safety in the Workplace.

Mary Ann will discuss overcoming some common challenges workplaces face in fostering psychologically safe culture.



**TUESDAY | NOVEMBER 22**  
12:00 - 2:00 PM

**The GrandWay Events Centre**  
(Grand River Raceway)  
7445 Wellington County Road 21, Elora, ON

**This event is FREE.**



Canadian Mental  
Health Association  
Waterloo Wellington

Association Canadienne  
pour la sante-mentale  
Waterloo Wellington

™ Official Mark of The Corporation of the County of Wellington



Alternate formats available upon request.